

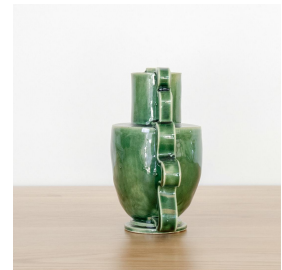


DOUBLE STRETCH VASE, GREEN

\$325.00

SKU# DSV04

IMAGES



DESCRIPTION

Hand-built ceramic vase by Morgan Peck. About the artist: Morgan Peck is a ceramicist living in Los Angeles. Every piece is made individually by hand without the use of molds in her backyard studio. Peck's work continues in the footsteps of the studio potters that preceded her and she takes note of numerous styles, hinting at the Memphis Group, the Bauhaus, and Art Deco. Measures 9" H x 9.5" W x 5" D. Made of glazed stoneware.

Hand-built ceramic vase by Morgan Peck. About the artist: Morgan Peck is a ceramicist living in Los Angeles. Every piece is made individually by hand without the use of molds in her backyard studio. Peck's work continues in the footsteps of the studio potters that preceded her and she takes note of numerous styles, hinting at the Memphis Group, the Bauhaus, and Art Deco. Measures 9" H x 9.5" W x 5" D. Made of glazed stoneware.

8279 Melrose Ave Los Angeles CA 90046

+1 (323) 438 3210

customerservice@panoplie.com

panoplie.com