

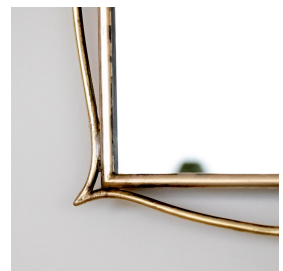


ITALIAN 1950'S BRASS MIRROR WITH LOOP DETAIL

\$2,800.00

SKU# VIN00244

IMAGES



DESCRIPTION

Vintage Italian brass mirror from the 1950s with beautiful curvy loop detail around frame. Unique and striking design. Nice age and patina to brass. Measures 20" W x 28.25" H x 1.5" D.

Vintage Italian brass mirror from the 1950s with beautiful curvy loop detail around frame. Unique and striking design. Nice age and patina to brass. Measures 20" W x 28.25" H x 1.5" D.

8279 Melrose Ave Los Angeles CA 90046

+1 (323) 438 3210

customerservice@panoplie.com

panoplie.com