



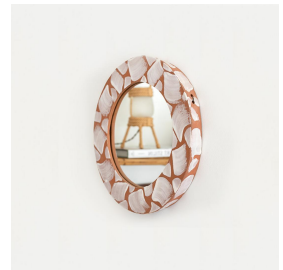
## TERRACOTTA BRUSH MARK MIRROR

\$575.00

SKU# BMM23

### IMAGES

---



### DESCRIPTION

---

Circular wall mirror made from terracotta with white brush marks on frame. Handmade by Morgan Peck. About the artist: Morgan Peck is a ceramicist living in Los Angeles. Every piece is made individually by hand without the use of molds in her backyard studio. Peck's work continues in the footsteps of the studio potters that preceded her and she takes note of numerous styles, hinting at the Memphis Group, the Bauhaus, and Art Deco.

\*This is an artisan made product and variances in color, size, and texture are normal.

Measures 13.5" x 1.5"

8279 Melrose Ave Los Angeles CA 90046

+1 (323) 438 3210

customerservice@panoplie.com

panoplie.com