

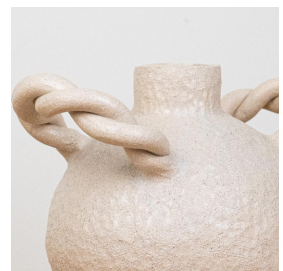
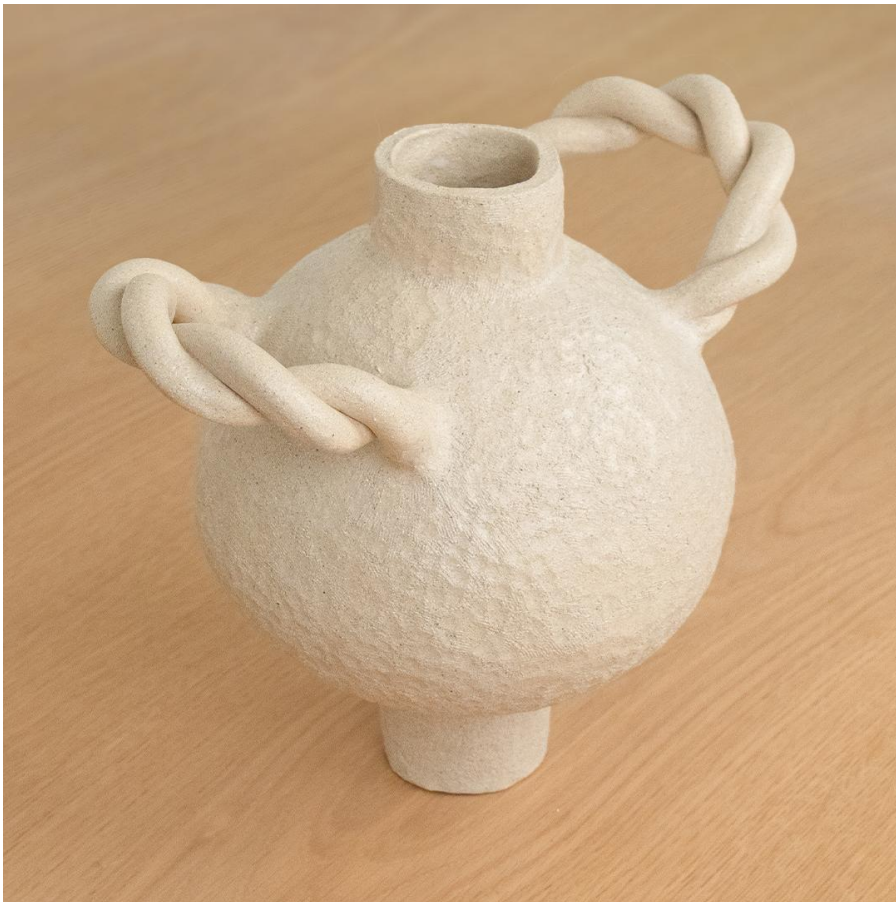


L' ENFANT LUNE TRESSÉ

\$550.00

SKU# CLA0013

IMAGES



DESCRIPTION

Hand-built ceramic vase with twisted handles and orb body in a smooth natural colored clay. Made by French artist Sophie Agullo of Clandestine Ceramique, based in Spain. Her collection can be seen as a love message to the Ocean, from the wavy handles to the sandy texture. Families of vases and pieces are meant to grow and mix together. Measures 10" H x 10.75" W x 8.25" D.

Hand-built ceramic vase with twisted handles and orb body in a smooth natural colored clay. Made by French artist Sophie Agullo of Clandestine Ceramique, based in Spain. Her collection can be seen as a love message to the Ocean, from the wavy handles to the sandy texture. Families of vases and pieces are meant to grow and mix together. Measures 10" H x 10.75" W x 8.25" D.

8279 Melrose Ave Los Angeles CA 90046

+1 (323) 438 3210

customerservice@panoplie.com

panoplie.com