

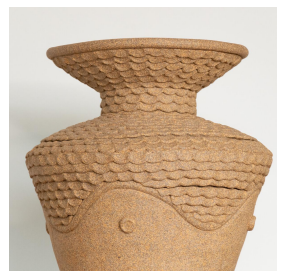


HYDRA VASE

\$425.00

SKU# CS0033

IMAGES



DESCRIPTION

Unique hand-built vessel in dark brown textured clay and ornate details. Cour Studio is the work of Venice based ceramicist Courtney Gertler. The focus of Cour Studio is to design and create pieces that bring joy to everyday activities, through playful and functional design.

*This is an artisan made product and variances in color, size, and texture are normal.

Measures 12" H x 9" D.

Measures 12" H x 9" D.

8279 Melrose Ave Los Angeles CA 90046

+1 (323) 438 3210

customerservice@panoplie.com

panoplie.com